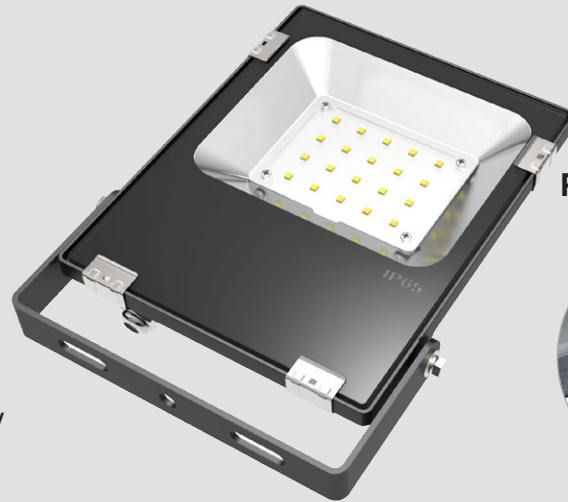


- ★ Ultra slim die cast aluminum housing with powder coated surface for corrosion resistance
- ★ Anodized aluminum reflector and clear tempered glass lens for good lighting distribution
- ★ Standard build-in PIR socket on each fitting
- ★ High quality SMD with Refond/Philips LED chip efficiency reaching 100lm/w
- ★ 50,000 hours lifespan with 3/5 years warranty
- ★ Optional Plug & Play PIR or Photocell



Optional Plug & Play PIR



Applications: Billboard, Building, Park, Pool, Parking Lot, etc.

Specifications

	IDM-FL-10	IDM-FL-20	IDM-FL-30	IDM-FL-50	IDM-FL-80	IDM-FL-100	IDM-FL-150	IDM-FL-200																
Unit Price																								
Photo																								
Size (mm)	140 x 107 x 32 mm	190 x 152 x 40 mm	200 x 167 x 40 mm	265 x 220 x 50 mm	300 x 245 x 55 mm	345 x 295 x 60 mm	365 x 330 x 60 mm	400 x 360 x 60 mm																
Wattage	10W	20W	30W	50W	80W	100W	150W	200W																
Ambient Temp	-25-45	-25-45	-25-45	-25-45	-25-45	-25-45	-25-45	-25-45																
Material	Aluminium+tempered glass	Aluminium+tempered glass	Aluminium+tempered glass	Aluminium+tempered glass	Aluminium+tempered glass	Aluminium+tempered glass	Aluminium+tempered glass	Aluminium+tempered glass																
IP	IP66																							
LED																								
LED Supplier	Refond		Refond		Refond		Philips		Philips		Philips		Philips											
SMD LED	SMD		SMD		SMD		SMD		SMD		SMD		SMD											
Colour Temp. (K)	WW	W	CW	WW	W	CW	WW	W	CW	WW	W	CW	WW	W	CW	WW	W	CW	WW	W	CW	WW	W	CW
	3000K	4000K	6500K	3000K	4000K	6500K	3000K	4000K	6500K	3000K	4000K	6500K	3000K	4000K	6500K	3000K	4000K	6500K	3000K	4000K	6500K			
	± 300K	± 300K	± 300K	± 300K	± 300K	± 300K	± 300K	± 300K	± 300K	± 300K	± 300K	± 300K	± 300K	± 300K	± 300K	± 300K	± 300K	± 300K	± 300K	± 300K	± 300K			
Lumen Output	1000LM	1000LM	1000LM	2000LM	2000LM	2000LM	3000LM	3000LM	3000LM	5000LM	5000LM	5000LM	8000LM	8000LM	8000LM	10,000LM	10,000LM	10,000LM	15,000LM	15,000LM	15,000LM	20,000LM	20,000LM	20,000LM
Ra	>80		>80		>80		>80		>80		>80		>80		>80		>80		>80		>80			
Efficacy (Lm/W)	100 LM/W		100 LM/W		100 LM/W		100 LM/W		100 LM/W		100 LM/W		100 LM/W		100 LM/W		100 LM/W		100 LM/W		100 LM/W			
Driver																								
Driver Brand	FUSHO																							
Power Factor	>0.95		>0.95		>0.95		>0.95		>0.95		>0.95		>0.95		>0.95		>0.95		>0.95		>0.95			
Voltage	AC180-265V		AC180-265V		AC180-265V		AC180-265V		AC180-265V		AC180-265V		AC180-265V		AC180-265V		AC180-265V		AC180-265V		AC180-265V			
Lifetime	50000H		50000H		50000H		50000H		50000H		50000H		50000H		50000H		50000H		50000H		50000H			
Warranty	3 Years		3 Years		3 Years		3 Years		3 Years		5 Years		5 Years		5 Years		5 Years		5 Years		5 Years			
PIR																			PIR Unit Price					

This document is not contractual and the equipment specification may be modified at any time without prior notice.