

SWT Conical Steel HD

Round Conical

Description and Specification

Seamless weld technology (SWT) makes Valmont conical steel columns a great starting point for your next decorative lighting project. Seamless weld technology allows Valmont to produce a column with a nearly invisible weld. The absence of a vertical seam elevates the aesthetic of the column giving it a more modern and contemporary feel.

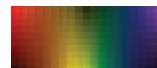
SWT conical steel columns available in a variety of conicities from 10mm to 17mm/m taper rates and mounting heights from 4 to 12 metres. They can be used for post top applications or supplied with demountable or integral bracket arm arrangements. Valmont operates a Quality Assurance system which complies with requirements of BS EN ISO 9001. Our welders and welding procedures are independently certified in accordance with EN ISO 9606 and EN ISO 15607.



Galvanized Steel

Finishing Options

As a standard, Valmont steel columns are galvanized to extend product longevity. Valmont offers several decorative finishing options including polyester power coating, wet painting, and sublimation. For more information contact your local Valmont representative.



RAL and AkzoNoble colour systems are available upon request.

SWT Conical Steel HD *Round Conical*

Planted Root Dimensions

Height (m)	Top (mm)	Base (mm)	Height (mm)	Width (mm)	Position (mm)	Root (mm)	Mounting Arrangement	Projection (m)
4	76	157	500	100	500	800	PT/SA/DA	0.5
5	76	175	500	100	500	800	PT/SA/DA	0.5
6	76	195	500	100	500	1000	PT/SA/DA	0.5
8	76	232	600	115	500	1200	PT/SA/DA	1
10	76	272	600	115	500	1500	PT/SA/DA	1
12	76	309	600	115	500	1700	PT/SA/DA	1

Flange Plated Dimensions

Height (m)	Top (mm)	Base (mm)	Height (mm)	Width (mm)	Position (mm)	Mounting Arrangement	Projection (m)	Width (mm)	Bolt Circle (mm)	Anchor Bolts
4	76	144	500	100	400	PT/SA/DA	0.5	260	200	M18 x 400
5	76	161	500	100	400	PT/SA/DA	0.5	260	200	M18 x 400
6	76	178	500	100	400	PT/SA/DA	0.5	260	200	M18 x 400
8	76	212	600	115	400	PT/SA/DA	1	420	300	M24 x 820
10	76	246	600	115	400	PT/SA/DA	1	420	300	M24 x 820
12	76	280	600	115	400	PT/SA/DA	1	420	300	M24 x 820

Headload Capacity

				22m/s		24m/s		26m/s		28m/s		30m/s		32m/s		34m/s		36m/s		M (kNm)	T (kN)				
				II	I	II	I	III	II	I	III	II	I	III	II	I	I	I							
4	Post Top	0	30	1.34	1.06	1.10	0.87	1.05	0.92	0.73	0.89	0.78	0.62	0.77	0.67	0.52	0.66	0.58	0.45	0.40	0.35	4.94	1.40	0.4 x 0.6	599
5	Post Top	0	30	1.40	1.12	1.16	0.91	1.18	0.96	0.77	0.99	0.82	0.65	0.84	0.70	0.55	0.74	0.60	0.47	0.41	0.37	7.03	1.69	0.4 x 0.7	831
6	Post Top	0	30	1.39	1.12	1.14	0.91	1.23	0.94	0.76	1.03	0.80	0.64	0.88	0.68	0.55	0.77	0.59	0.47	0.41	0.36	9.09	1.88	0.4 x 0.8	552
8	Post Top	0	30	1.13	0.91	0.91	0.74	1.07	0.76	0.61	0.89	0.63	0.51	0.76	0.53	0.42	0.65	0.45	0.37	0.31	0.26	12.07	2.25	0.5 x 0.9	420
10	Post Top	0	30	2.07	1.71	1.69	1.41	1.93	1.42	1.18	1.63	1.20	0.99	1.39	1.02	0.83	1.20	0.87	0.71	0.61	0.51	26.14	3.56	0.7 x 1.3	466
12	Post Top	0	30	2.13	1.78	1.75	1.46	1.95	1.45	1.21	1.64	1.22	1.00	1.39	1.03	0.83	1.19	0.87	0.70	0.58	0.48	34.97	4.49	0.8 x 1.4	426

All dimensions and technical information given as an indication. Valmont reserves the right to make, without delay and without prior notice, the technical or aesthetic modifications that it deems necessary to improve the products of the Standard Collection.

* Mounting Arrangement Abbreviations: PT = Post Top, SA = Single Arm, DA = Double Arm, QA = Quad Arm, FL = Floodlight, SE = Side Entry, CB = Crossbar, CR = Crown, PF = Platform, OT = Other
 * Speeds given are basic 10 minute mean wind speeds in 2m/s increments, if national wind speeds lie between these figures please interpret using linear interpolation.

* **M** = Bending moment at baseplate, **T** = Shear force at baseplate.