

Idyline Courbe

Modular Aluminium Range

Description and Specification

An exclusive concept for designing “bespoke” solutions from standard elements. The range consist of 9 elements which can be combined to create 489 unique lighting columns. The Idyline range is 100% Aluminium, 30% of which are recycled materials.

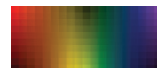
Modular aluminium lighting columns are available in heights from 5 to 9 metres. These columns are supplied with an integral bracket arm. The Idyline series is fundamentally formed on 2 forms being Sigma (“S” shaped) and Courbe (“C” shaped). Also possible is rotation between the elements by 90° to create further variations in form according to the wishes of the designer demands. Elements in 6060T5 & T6 Brushed Aluminium. Interfaces pieces in AISi7Mg Aluminium alloy. Valmont operates a Quality Assurance system which complies with requirements of BS EN ISO 9001. Our welders and welding procedures are independently certified in accordance with EN ISO 9606 and EN ISO 15607.



Aluminium

Finishing Options

As a standard, Valmont aluminium columns are brushed to a satin finish. Valmont offers several decorative finishing options including anodization, spectro-colouring, polyester power coating, wet painting, and sublimation. For more information contact your local Valmont representative.



RAL and AkzoNoble colour systems are available upon request.

Idyline Courbe Modular Aluminium Range

Planted Root Dimensions

Mast	Height (m)	Top (mm)	Base (mm)	Height (mm)	Width (mm)	Position (mm)	Root (mm)	Mounting Arrangement	Projection (m)
c0-01	5	60	140	400	75	500	800	PT/SE	0.15
c0-02	6	60	140	400	75	500	1000	PT/SE	0.15
c0-03	8.5	60	180	500	100	500	1500	PT/SE	0.15
c5-01	5	60	140	400	75	500	800	PT/SE	0.15
c5-02	7	60	180	500	100	500	1200	PT/SE	0.15
c5-03	7.8	60	180	500	100	500	1200	PT/SE	0.15
c5-04	8.6	60	180	500	100	500	1500	PT/SE	0.15
c10-01	4.8	60	140	400	75	500	800	PT/SE	0.15
c10-02	5.8	60	140	400	75	500	1000	PT/SE	0.15
c10-03	7.8	60	180	500	100	500	1200	PT/SE	0.15

Flange Plated Dimensions

Mast	Height (m)	Top (mm)	Base (mm)	Height (mm)	Width (mm)	Position (mm)	Mounting Arrangement	Projection (m)	Width (mm)	Bolt Circle (mm)	Anchor Bolts
c0-01	5	60	140	400	75	500	PT/SE	0.15	270	200	M14/16x300
c0-02	6	60	140	400	75	500	PT/SE	0.15	270	200	M14/16x300
c0-03	8.5	60	180	500	100	500	PT/SE	0.15	400	300	M18/20x400
c5-01	5	60	140	400	75	500	PT/SE	0.15	270	200	M14/16x300
c5-02	7	60	180	500	100	500	PT/SE	0.15	400	300	M18/20x400
c5-03	7.8	60	180	500	100	500	PT/SE	0.15	400	300	M18/20x400
c5-04	8.6	60	180	500	100	500	PT/SE	0.15	400	300	M18/20x400
c10-01	4.8	60	140	400	75	500	PT/SE	0.15	270	200	M14/16x300
c10-02	5.8	60	140	400	75	500	PT/SE	0.15	270	200	M14/16x300
c10-03	7.8	60	180	500	100	500	PT/SE	0.15	400	300	M18/20x400

Headload Capacity

Height (m)	Mounting Type	Projection (mm)	Mass (kg)	Wind Speeds												M (kNm)	T (kN)	Foundation Size (m)	Concrete Ø (mm)												
				22m/s			24m/s			26m/s			28m/s							30m/s			32m/s			34m/s			36m/s		
				II	I	III	II	I	III	II	I	III	II	I	III					II	I	III	II	I	III	II	I	III	II	I	III
5	PT/SE	0.15	30	0.44	0.33	0.35	0.25	0.34	0.26	0.18	0.27	0.2	0.13	0.2	0.15	0.09	0.16	0.11	0.06	0.04	0.02	3.588	1.102	0.4 x 0.5	424						
6	PT/SE	0.15	30	0.12	0.06	0.07	0.02	0.07	0.03	0	0.03	0	0	0	0	0	0	0	0	0	0	3.15	0.95	0.4 x 0.5	191						
8.5	PT/SE	0.15	30	0.09	0.04	0.04	0	0.07	0	0	0.03	0	0	0	0	0	0	0	0	0	0	6.688	1.389	0.4 x 0.7	0						
5	PT/SE	0.15	30	0.33	0.24	0.25	0.17	0.24	0.19	0.12	0.19	0.14	0.08	0.14	0.1	0.05	0.1	0.07	0.03	0.01	0	3.265	1.065	0.4 x 0.5	386						
7	PT/SE	0.15	30	0.35	0.25	0.26	0.18	0.3	0.19	0.13	0.23	0.14	0.09	0.18	0.11	0.06	0.14	0.08	0.04	0.03	0.02	6.658	1.688	0.4 x 0.7	235						
7.8	PT/SE	0.15	30	0.15	0.09	0.09	0.04	0.13	0.04	0	0.08	0.01	0	0.04	0	0	0.01	0	0	0	0	5.958	1.383	0.4 x 0.7	207						
8.6	PT/SE	0.15	30	0.11	0.06	0.06	0.01	0.09	0.02	0	0.05	0	0	0.01	0	0	0	0	0	0	0	6.815	1.405	0.4 x 0.7	0						
4.8	PT/SE	0.15	30	0.31	0.22	0.23	0.16	0.22	0.17	0.11	0.17	0.12	0.07	0.12	0.09	0.04	0.09	0.06	0.02	0	0	3.085	0.99	0.4 x 0.5	365						
5.8	PT/SE	0.15	30	0.08	0.03	0.03	0	0.04	0	0	0	0	0	0	0	0	0	0	0	0	0	2.849	0.867	0.4 x 0.5	173						
7.8	PT/SE	0.15	30	0.2	0.12	0.13	0.07	0.17	0.08	0.03	0.11	0.04	0	0.07	0.01	0	0.04	0	0	0	0	6.374	1.431	0.4 x 0.7	222						

All dimensions and technical information given as an indication. Valmont reserves the right to make, without delay and without prior notice, the technical or aesthetic modifications that it deems necessary to improve the products of the Standard Collection.

* Mounting Arrangement Abbreviations: PT = Post Top, SA = Single Arm, DA = Double Arm, TA = Triple Arm, QA = Quad Arm, FL = Floodlight, SE = Side Entry, CB = Crossbar, CR = Crown, PF = Platform, OT = Other
 * Speeds given are basic 10 minute mean wind speeds in 2m/s increments, if national wind speeds lie between these figures please interpret using linear interpolation.
 * **M** = Bending moment at baseplate, **T** = Shear force at baseplate.