

Koli Park UK

Square Tapered, light duty

Description and Specification

Koli Park is a light duty version of the standard Koli range of square tapered, wooden lighting columns. Koli Park is suitable for city centres and pedestrian areas. The tapering square profile of the Koli range is unusual for a lighting column. None the less, this simple geometric form pairs well with many types of architecture and can be used to blend in or stand out. The choice is yours!

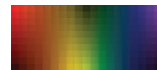
All shafts are manufactured from GL28h glued-laminated timber. The raw materials we use are harvested from sustainably managed, PEFC certified forests. All wood is treated with a water-based stain finish consisting of four protective coats, VOCs <100g/l. Square base and flush pole cap, in hot dip galvanised and powder coated S235 steel. The range is designed and developed according to Eurocode 5, standards ISO EN40 and ISO EN1995. A ZEP contract for CO2 compensation is available. Please contact your representative for more product information.



Glue Laminated Timber

Finishing Options

All wooden components are treated with a water-based stain finish consisting of four protective coats, VOCs <100g/l. Pole base and flush pole cap in hot dip galvanized and powder coated S235 steel. For more information contact your local Valmont representative.



RAL and AkzoNoble colour systems are available upon request.

Koli Park UK Square Tapered, light duty

Planted Root Dimensions

Height (m)	Top (mm)	Base (mm)	Height (mm)	Width (mm)	Position (mm)	Root (mm)	Steel Height (mm)	Mounting Arrangement	Projection (m)
4	100	140	500	100	500	800	1400	PT	0
5	100	140	500	100	500	800	1400	PT	0
6	100	140	500	100	500	1000	1400	PT	0

Flange Plated Dimensions

Height (m)	Top (mm)	Base (mm)	Height (mm)	Width (mm)	Position (mm)	Steel Height (mm)	Mounting Arrangement	Projection (m)	Width (mm)	Bolt Circle (mm)	Anchor Bolts
4	100	140	500	100	500	1400	PT	0	270	200	M14/16 x 300
5	100	140	500	100	500	1400	PT	0	270	200	M14/16 x 300
6	100	140	500	100	500	1400	PT	0	270	200	M14/16 x 300

Headload Capacity

				22m/s		24m/s		26m/s			28m/s			30m/s						32m/s		34m/s		36m/s		
				II	I	II	I	III	II	I	III	II	I	III	II					I	III	II	I	I	I	
4	PT	0	25	2.9	2.3	2.39	1.9	2.31	1.99	1.56	1.94	1.66	1.29	1.64	1.39	1.07	1.38	1.17	0.89	0.75	0.62	10.74	3.16	0.5 x 0.9	1301	
5	PT	0	25	1.79	1.41	1.45	1.13	1.49	1.19	0.91	1.23	0.97	0.74	1.02	0.81	0.6	0.85	0.66	0.46	0.36	0.26	10.69	3.00	0.5 x 0.9	1263	
6	PT	0	25	1.12	0.84	0.87	0.64	0.94	0.67	0.47	0.74	0.52	0.35	0.58	0.4	0.25	0.44	0.29	0.15	0.06	0	10.66	3.15	0.5 x 0.9	648	

All dimensions and technical information given as an indication. Valmont reserves the right to make, without delay and without prior notice, the technical or aesthetic modifications that it deems necessary to improve the products of the Standard Collection.

* Mounting Arrangement Abbreviations: PT = Post Top, SA = Single Arm, DA = Double Arm, QA = Quad Arm, FL = Floodlight, SE = Side Entry, CB = Crossbar, CR = Crown, PF = Platform, OT = Other

* Speeds given are basic 10 minute mean wind speeds in 2m/s increments, if national wind speeds lie between these figures please interpret using linear interpolation.

* **M** = Bending moment at baseplate, **T** = Shear force at baseplate.