



Koli UK

Square Tapered

Description and Specification

Koli is a range of square tapered, wooden lighting columns. Koli is suitable for city centres and pedestrian areas. The tapering square profile of the Koli range is unusual for a lighting column. None the less, this simple geometric form pairs well with many types of architecture and can be used to blend in or stand out. The choice is yours!

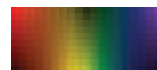
All shafts are manufactured from GL28h glued-laminated timber. The raw materials we use are harvested from sustainably managed, PEFC certified forests. All wood is treated with a water-based stain finish consisting of four protective coats, VOCs <100g/l. Square base and flush pole cap, in hot dip galvanised and powder coated S235 steel. The range is designed and developed according to Eurocode 5, standards ISO EN40 and ISO EN1995. A ZEP contract for CO2 compensation is available.



Glue Laminated Timber

Finishing Options

All wooden components are treated with a water-based stain finish consisting of four protective coats, VOCs <100g/l. Pole base and flush pole cap in hot dip galvanized and powder coated S235 steel. For more information contact your local Valmont representative.



RAL and AkzoNoble colour systems are available upon request.

Koli UK Square Tapered

Planted Root Dimensions

Height (m)	Top (mm)	Base (mm)	Height (mm)	Width (mm)	Position (mm)	Root (mm)	Steel Height (mm)	Mounting Arrangement	Projection (m)
5	120	160	500	100	500	800	1500	PT/SA/DA	1
6	120	160	500	100	500	1000	1500	PT/SA/DA	1
8	120	180	600	115	500	1200	1600	PT/SA/DA	1

Flange Plated Dimensions

Height (m)	Top (mm)	Base (mm)	Height (mm)	Width (mm)	Position (mm)	Steel Height (mm)	Mounting Arrangement	Projection (m)	Width (mm)	Bolt Circle (mm)	Anchor Bolts
5	120	160	500	100	500	1500	PT/SA/DA	1	270	200	M14/16 x 300
6	120	160	500	100	500	1500	PT/SA/DA	1	270	200	M14/16 x 300
8	120	180	600	115	500	1600	PT/SA/DA	1	400	300	M18/20 x 400

Headload Capacity

				22m/s		24m/s		26m/s			28m/s			30m/s						32m/s		34m/s		36m/s		
				II	I	II	I	III	II	I	III	II	I	III	II					I	III	II	I	I	I	
5	PT	0	25	2.24	1.74	1.78	1.37	1.81	1.43	1.08	1.47	1.15	0.85	1.2	0.92	0.67	0.97	0.74	0.51	0.39	0.28	11.68	2.70	0.5 x 0.9	1380	
6	PT	0	25	1.49	1.13	1.14	0.83	1.22	0.86	0.6	0.94	0.65	0.42	0.72	0.46	0.28	0.53	0.33	0.16	0.05	0	11.67	2.58	0.5 x 0.9	709	
8	PT	0	25	1.61	1.22	1.23	0.89	1.44	0.92	0.64	1.13	0.69	0.44	0.87	0.5	0.28	0.66	0.35	0.15	0.04	0	22.92	5.58	0.7 x 1.2	797	

All dimensions and technical information given as an indication. Valmont reserves the right to make, without delay and without prior notice, the technical or aesthetic modifications that it deems necessary to improve the products of the Standard Collection.

* Mounting Arrangement Abbreviations: PT = Post Top, SA = Single Arm, DA = Double Arm, QA = Quad Arm, FL = Floodlight, SE = Side Entry, CB = Crossbar, CR = Crown, PF = Platform, OT = Other

* Speeds given are basic 10 minute mean wind speeds in 2m/s increments, if national wind speeds lie between these figures please interpret using linear interpolation.

* **M** = Bending moment at baseplate, **T** = Shear force at baseplate.